



Great Quest Gold (TSX.V: GQ)

Canadian-mineral exploration company focused on gold exploration in Africa. With a diverse portfolio of high-grade deposits, the company is strategically positioned to make significant new discoveries.

NAMIBIA

Damara Project

Land package with access to three distinct project areas:

Khorixas Gold Project (169,000 hectares)

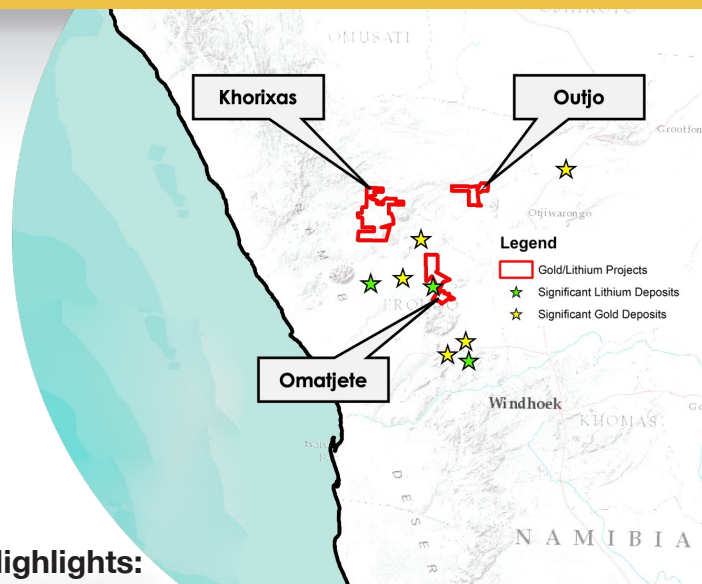
- Situated 350 km northeast of Walvis Bay, within the northern zone of the Damara Orogenic Belt
- Key exploration targets: Belmont, K17, K15
- Over 30,000 grab samples collected across the concession

Omatjete Gold Project (93,000 hectares)

- North Central Zone of the Damara Belt, along the trajectory of two significant regional shears and thrusts
- On strike with Kokoseb discovery (WIA Gold)
- Arsenic correlation is a crucial tool in the Otjikoto and Twin Hills discoveries

Outjo Gold Project (46,000 hectares)

- Greenfield opportunity. No historical exploration on the Kuiseb Formation
- Outjo Basin's geology is consistent with Namibian basins that have hosted major gold deposits



Highlights:

Belmont Target:

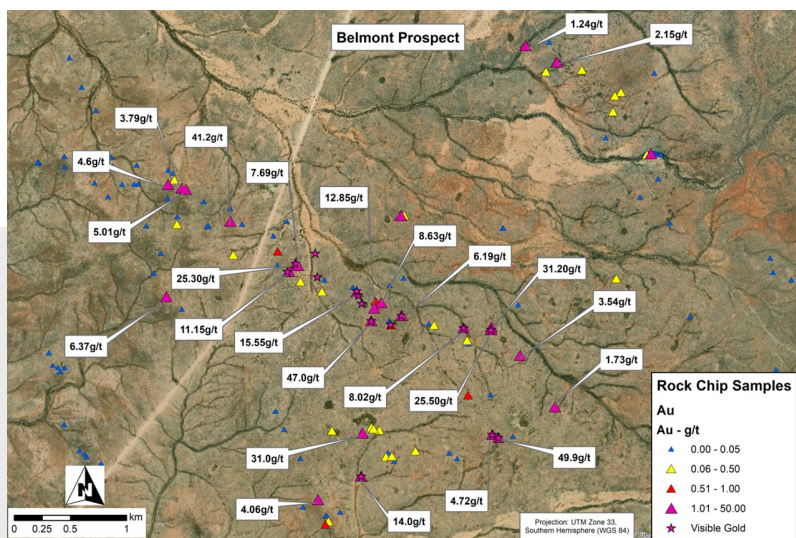
3.93 g/t Au (BK1 NW)
2.5 g/t Au (BK1 NE)
4.6 g/t Au (BK2)
8.08 g/t Au (BK13)
145.7 g/t Au (VG Hill)

K-17 Target:

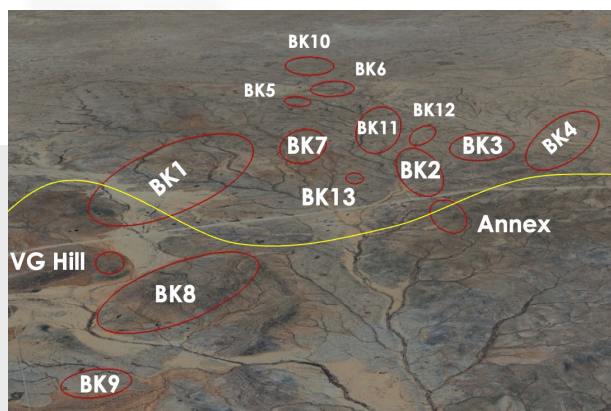
21 g/t Au
16.25% Cu
37.8 g/t Ag

Omatjete:

Rock chips peak at 10 g/t Au
2552 Samples analyzed via XRF



Belmont Corridor



POTENTIAL CATALYSTS

- 3,000 metres on drilling (Khorixas)
- Sampling Campaign (Soil and Rock Chip Samples)
- Induced Polarization (IP) Survey at K17

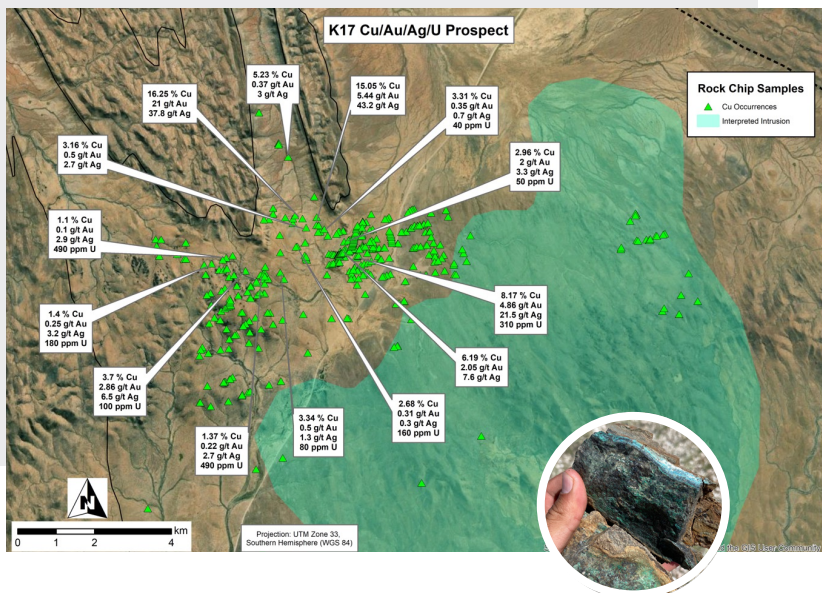
Share Performance

Share Price	\$0.04
Market Cap	C\$ 6.6M
52-Week Range	\$0.01 - \$0.09

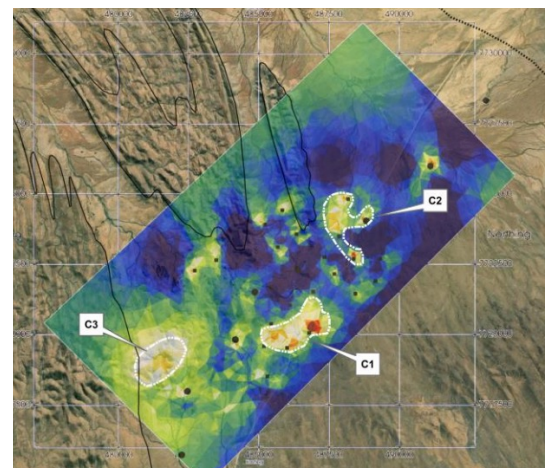
Capital Structure

Common Shares	166.7M
Warrants	40M
Options	400k
Fully Diluted	207.1M

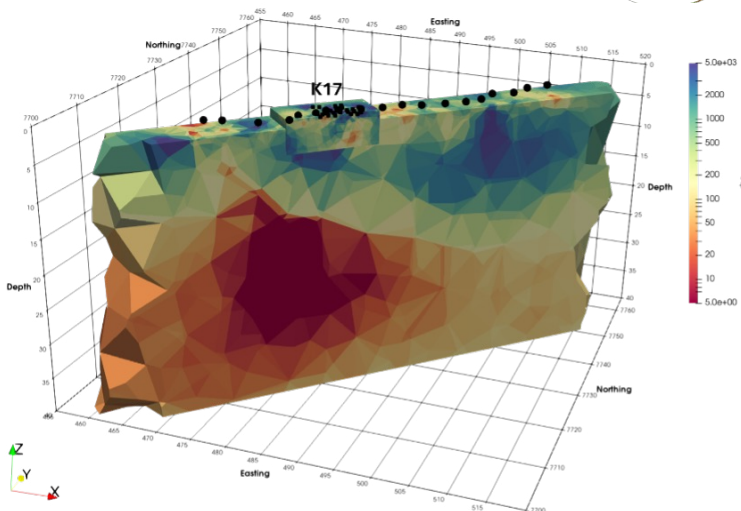
Map of the K17 Target



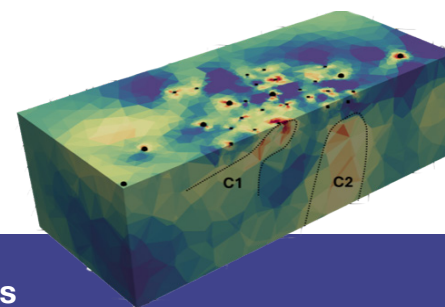
Magnetotellurics - 250m Depth



3D inversion of the magnetotelluric grid at K17 outlining the individual conductors (C1-C3)



3D inversion of the magnetotelluric profile across the Khorixas basin showing the major conductor in proximity to the surface mineralization at K17.



Highlights

- Major conductor identified as potential source for K17 Cu/Au/Ag/U mineralization
- Multiple shallow conductors identified immediately below surface mineralization at K17 target
- A section line of 51km of deep penetrating Magnetotellurics complete through the Khorixas basin
- A grid comprising 30 square kilometres of Magnetotellurics complete across the K17 target area

Board of Directors

John Clarke, *Chairman*
 Jed Richardson, *Executive Chairman*
 Mama Tapo, *Director*
 Albert Yuen, *Director*

595 Howe St 10th Floor, Vancouver
 BC V6C 2T5

Management

Dr. Andreas Rompel
President & Chief Exploration Officer
 Mohammed Bouhsane
Manager Morocco/Mali
 Tom Panoulis
VP Corporate Development



ir@greatquest.com
 greatquest.com

